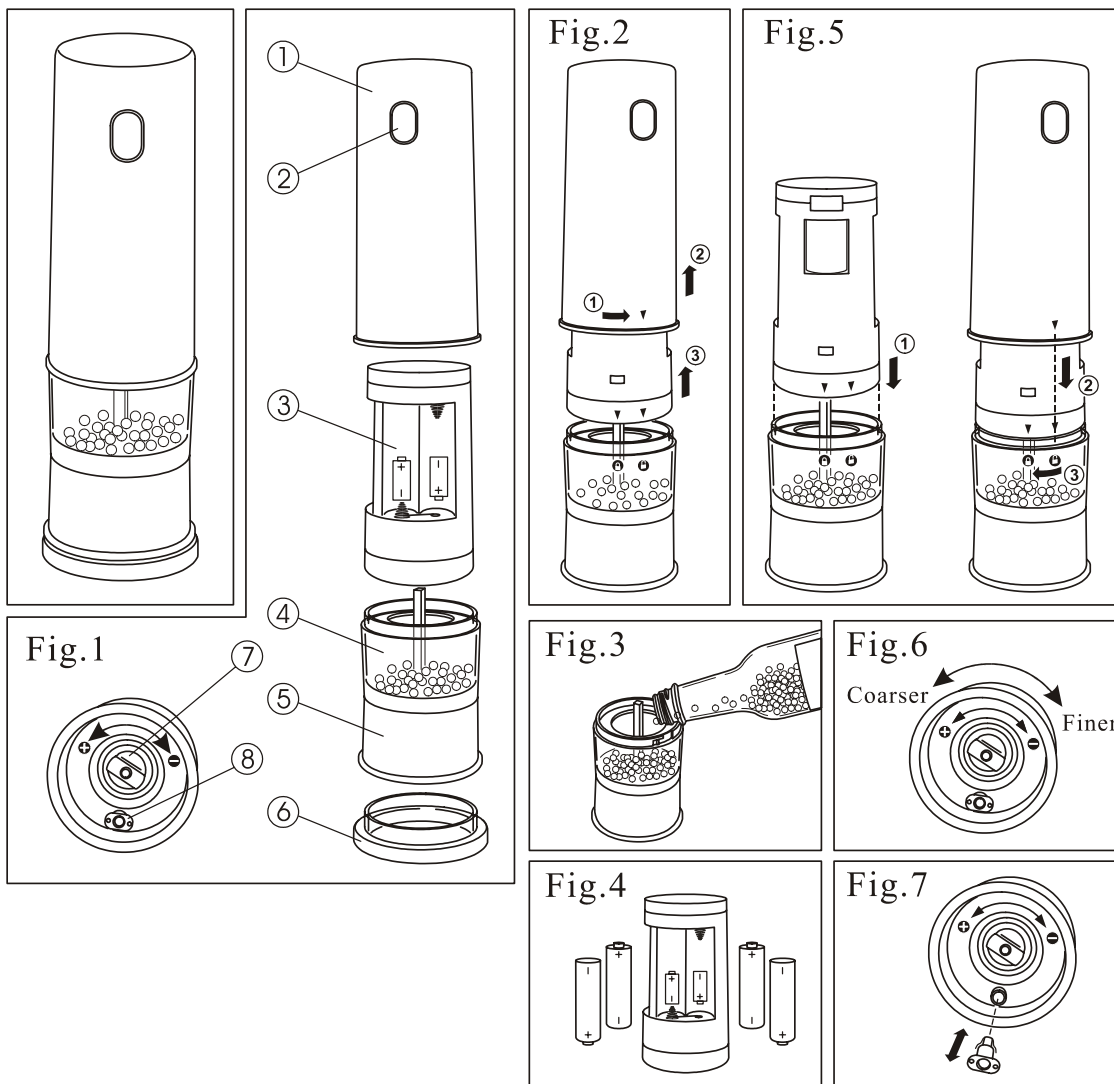


# MAVERICK MODEL # PM-02 BATTERY OPERATED PEPPER/SALT MILL

## Important information and safety instructions:

**Attention:** This item is designed for use only as a pepper/salt mill. It can only be operated by battery power; it cannot be recharged by any other means. Unsuitable usage of the mill for any other purpose or function should be regarded as dangerous. The vendor and manufacturer of the item will refuse all liability for damages that may arise from such unsuitable usage of the mill. The mill should be kept out of reach of children.

- Do not place on a hot surface (i.e. Stove top, etc ...)
- Or place near extreme heat.
- The mill should not be left outdoors.
- Do not place your fingers or any other object into the grinding mechanism.
- The mill should never be put in contact with water. Do not touch or operate the mill with wet hands. Do not submerge the mill into liquids or place in a dishwasher.
- Do not press the function button continuously. Allow the grinding mechanisms to work in shorter bursts.
- We recommend that you store the mill in an upright position.



**Know your Pepper/Salt Mill:** (Fig. 1)

1. Stainless steel upper housing
2. Press button (normally off)
3. Motor body with battery housing
4. Transparent container (transparent fill-in area)
5. Stainless steel lower housing
6. Transparent mill stand
7. Variable grinding level control knob
8. Control lamp while operating

**Equipping the mill with batteries and filling with pepper/salt:**

1. Place hand under the lower housing, then with the other hand carefully
2. turn the upper housing counterclockwise to the unlock position and lift housing upwards (Fig.2).
3. Simply lift battery housing from the base.
4. Fill the transparent container with peppercorns/salt, through the round opening (Fig.3).
5. Place 4 AA batteries into the battery housing. Please pay attention to the +/- markings (Fig. 4).
6. Place the battery housing onto the transparent container with the arrow marking point to the lock/unlock marking (Fig. 5).
7. Ensure that the grinder device is positioned in the centre of the bottom opening of the battery housing. Now you can place the upper housing over the battery housing, then turn until it rests in it's original setting lock position.
8. The mill is now ready to be used. You can start the grinding process by pressing the button on the stainless steel upper housing.

**Noted:** Should you experience a gradual decline of pepper/salt output when using the mill, there may not be enough peppercorns/salt in supply chamber or a peppercorn/salt may be blocked in the mechanism. In this case, gently shake the mill to enable peppercorns/salt to fall down into the grinder.

**Adjusting the setting for pepper/salt grade refinement:**

Turn the pepper/salt mill upside down. The control knob to regulate the fineness of the pepper/salt is located between the grinding device and the arm. Turn the knob clockwise for finer pepper/salt and counterclockwise for coarser pepper/salt (Fig. 6).

**Exchanging the batteries:**

We recommend the use of Alkaline batteries for a longer life span. Do not leave flat batteries in the mill. Please remove batteries when the mill is not in use for an extended period of time. To achieve best results, always replace all 4 AA batteries at the same time. Remember to discard used batteries in accordance with local regulations.

Before using this mill for the first time, please inspect it to ensure that there are no visible manufacturing defects. If any defect is found, please follow warranty instructions for repair/replacement. All repairs should be handled by Maverick Customer Service to avoid any danger or injury.

**Lamp Replacement:**

This mill is equipped with a lamp which lights up when using. To exchange the light bulb, turn the pepper/salt mill upside down. Take the light bulb out by using the thumb and the forefinger and gently remove it. Replace the new light bulb by gently pushing prongs into the holes (Fig. 7).

**Cleaning Instructions:**

Please use a dry cloth when cleaning the mill. Do not expose mill to moisture. Do not use any detergent to clean it. Only wipe the outside with a soft, dry, dust-free cloth.

**MAVERICK LIMITED 90 DAY WARRANTY**

Maverick Industries Inc. warrants this product to be free of defects in parts, materials and workmanship for a period of 90 days, from date of purchase. Should any repairs or servicing under this warranty be required, contact Maverick Customer Service by mail or phone for instructions on how to pack and ship the product to Maverick's National Service Center located as follows:

Maverick Customer Service  
94 Mayfield Ave.  
Edison NJ 08837  
[www.maverickhousewares.com](http://www.maverickhousewares.com)

Telephone: (732) 417-9666  
Hours: Weekdays 8:30 AM- 4:30 PM

Do not send any parts or product to Maverick without calling and obtaining a Return Authorization Number and instructions.

This warranty is VOID if instructions for use are not followed; for accidental damage; for commercial use; for damage incurred while in transit; or if the product has been tampered with.

This warranty gives you specific legal rights and you may also have other rights which vary from state to state.